

**CONFIDENTIAL**

# **SCRAM Systems Non-Compliance Report**

Thursday, June 17, 2021

**Agency Name:** Anywhere County Pretrial

**Client Name:** JOHN DOE

**Case Number:** 1234567

**Confirmed Event Dates:** 6/15/2021, 6/14/2021, 6/14/2021

**Report Prepared by:** SCRAM Service Provider

## **MANUFACTURER'S DESCRIPTION OF TECHNOLOGY**

The SCRAM Continuous Alcohol Monitoring® CAM Bracelet (SCRAM CAM®) is manufactured by SCRAM Systems®. The CAM Bracelet uses an electrochemical fuel cell to detect alcohol. At a predetermined interval, a pump in the CAM Bracelet pulls a controlled sample to the fuel cell for analysis. The amount of reaction of the fuel cell is interpreted and a Transdermal Alcohol Concentration (TAC) is calculated. TAC is a quantitative measure of the alcohol concentration in the vapor above the skin.

Tamper Technology contained in the CAM Bracelet includes both an Infrared (IR) sensor and temperature sensor. The IR sensor emits an infrared light between the CAM Bracelet and the leg of the client, and the reflection of the light is then measured in volts. Deviations in the IR voltage are used to detect obstructions between the CAM Bracelet and the leg. The temperature sensor monitors the CAM Bracelet temperature and is thus impacted by both the body's warming effect and the environmental temperature. Deviations in the IR voltage and temperature assist in the detection of removals.

## **DATA INTERPRETATION SUMMARY**

In the event that alcohol is detected by the SCRAM CAM Bracelet, an alert is generated. All TAC alerts are analyzed, and data is interpreted by a team of SCRAM Systems' trained data analysts. These alerts must meet a strict set of rules referred to as the 'confirmation criteria,' and all TAC detections must meet all criteria to be confirmed as alcohol consumption.

In the event that deviations in the IR voltage and temperature indicate the presence of an obstruction or removal, a tamper alert is generated. Like TAC alerts, all tamper alerts are analyzed, and data is interpreted by a team of trained data analysts according to a strict set of rules referred to as 'confirmation criteria'. All tamper alerts must meet all criteria in order to be confirmed as an obstruction or removal.

If the alert is confirmed, notification is then provided to the supervising agency.

## **CONFIRMATION CRITERIA**

### **Confirmed Alcohol Consumption**

Alcohol detections confirmed as consumption by SCRAM Systems are identified by the Transdermal Alcohol Curve and meet the following criteria:

1. A baseline transdermal alcohol concentration (TAC) of zero must be established.\*
2. A peak transdermal alcohol concentration (TAC) must be established.
3. A zero transdermal alcohol concentration (TAC) baseline must be re-established.\*
4. The absorption rate must be less than .100 TAC per/hour.
5. The elimination rate must be less than or equal to .035 TAC per hour.
6. The event must pass the Environmental Contaminant Test.

\* Zero TAC baseline is defined as two consecutive readings at 0.000 TAC

### **Confirmed Tamper**

Tamper detections confirmed as obstructions by SCRAM Systems are identified by a sustained deviation in the IR voltage that is outside of the acceptable variance and meet the following criteria:

1. When No TAC is Present:  
8 hours or more with a deviation in the IR voltage equal to or greater than 12% above the baseline voltage.
2. When TAC is Present:  
3 hours or more with a deviation in the IR voltage equal to or greater than 12% above the baseline voltage.
3. IR Voltage Baseline:  
IR voltage readings return to the established baseline at the end of the event.

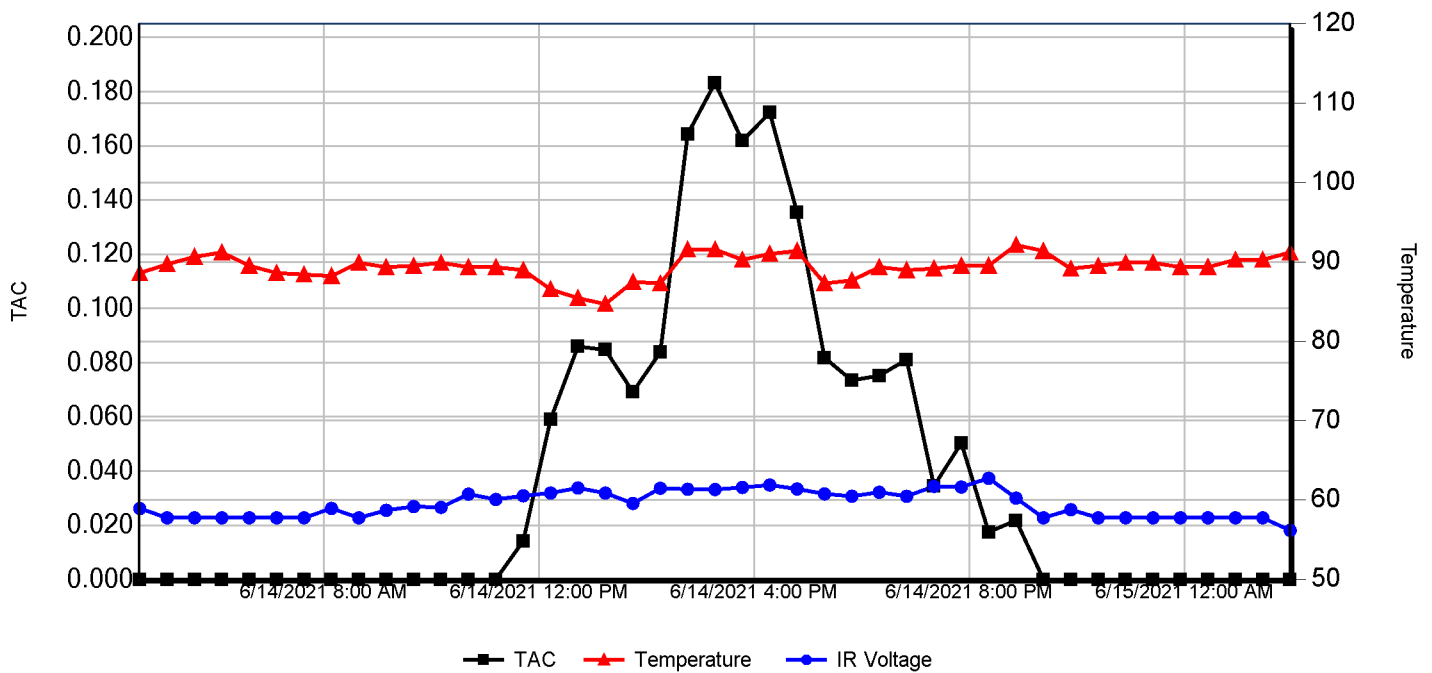
**Client Information**

Client JOHN DOE first began the SCRAM CAM program on 2/11/2021. They were assigned SCRAM CAM Bracelet 654321 on 2/23/2021. SCRAM CAM Bracelet 654321 was last serviced and calibrated at SCRAM Systems on 1/22/2021.

**Graph Interpretation**

The graph displays the relationship between TAC, IR, and Temperature measurements in the CAM Bracelet. The Transdermal Alcohol Concentration (TAC) readings are the black line and are represented on the scale to the left of the graph. The Infrared (IR) readings are identified on the blue line, and the temperature readings are displayed on the red line and represented by the scale on the right of the graph. When a CAM Bracelet is placed on a client, baseline IR voltage readings are established indicating the CAM Bracelet is installed on the client.

**Confirmed Tamper with Alcohol Detected**



This event met SCRAM Systems criteria for a confirmed tamper:

1. The IR voltage baseline prior to the event was .665 volts.
2. The IR voltage at the start of the deviation was .767 volts.
3. Deviation outside of the acceptable variance began on Monday, June 14, 2021 at 8:08 AM and returned to baseline on Monday, June 14, 2021 at 10:23 PM.
4. The total duration of the confirmed tamper was 0 days 14 hours and 15 minutes.
5. Alcohol was detected during the tamper.

**Client Information**

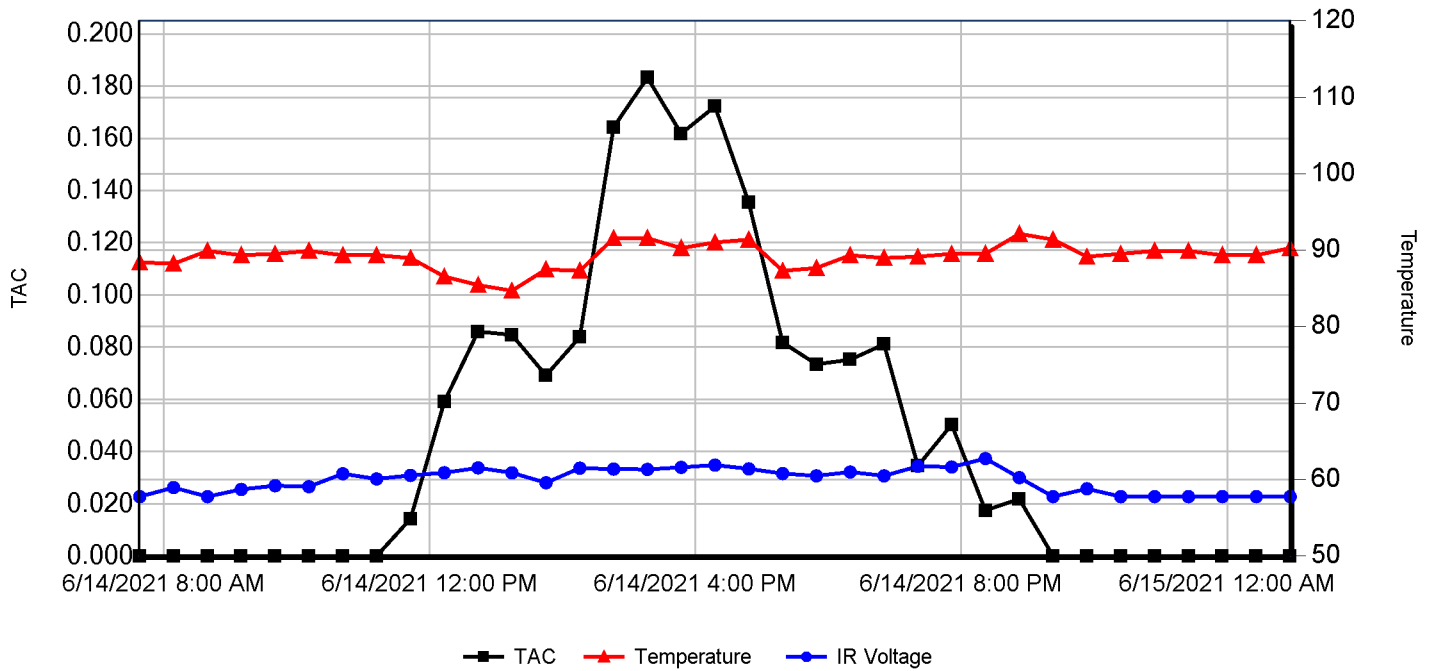
Client JOHN DOE first began the SCRAM CAM program on 2/11/2021. They were assigned SCRAM CAM Bracelet 654321 on 2/23/2021. SCRAM CAM Bracelet 654321 was last serviced and calibrated at SCRAM Systems on 1/22/2021.

**Graph Interpretation**

The graph displays the relationship between TAC, IR, and Temperature measurements in the CAM Bracelet. The Transdermal Alcohol Concentration (TAC) readings are the black line and are represented on the scale to the left of the graph. The Infrared (IR) readings are identified on the blue line, and the temperature readings are displayed on the red line and represented by the scale on the right of the graph. When a CAM Bracelet is placed on a client, baseline IR voltage readings are established indicating the CAM Bracelet is installed on the client.

**Confirmed Alcohol Consumption**

The graph below displays the confirmed alcohol consumption event. Routine diagnostics performed on the bracelet indicate that the bracelet was functioning properly at the time of the confirmed consumption event.



This detection met SCRAM Systems criteria to be confirmed as alcohol consumption:

1. A baseline TAC of zero was established on Monday, June 14, 2021 at 11:12 AM.
2. A peak TAC of .183% was established on Monday, June 14, 2021 at 3:16 PM.
3. Zero TAC was re-established on Monday, June 14, 2021 at 9:23 PM.
4. The absorption rate was .045 TAC per hour.
5. The elimination rate was .030 TAC per hour.
6. The event passed the Environmental Contaminant Test.

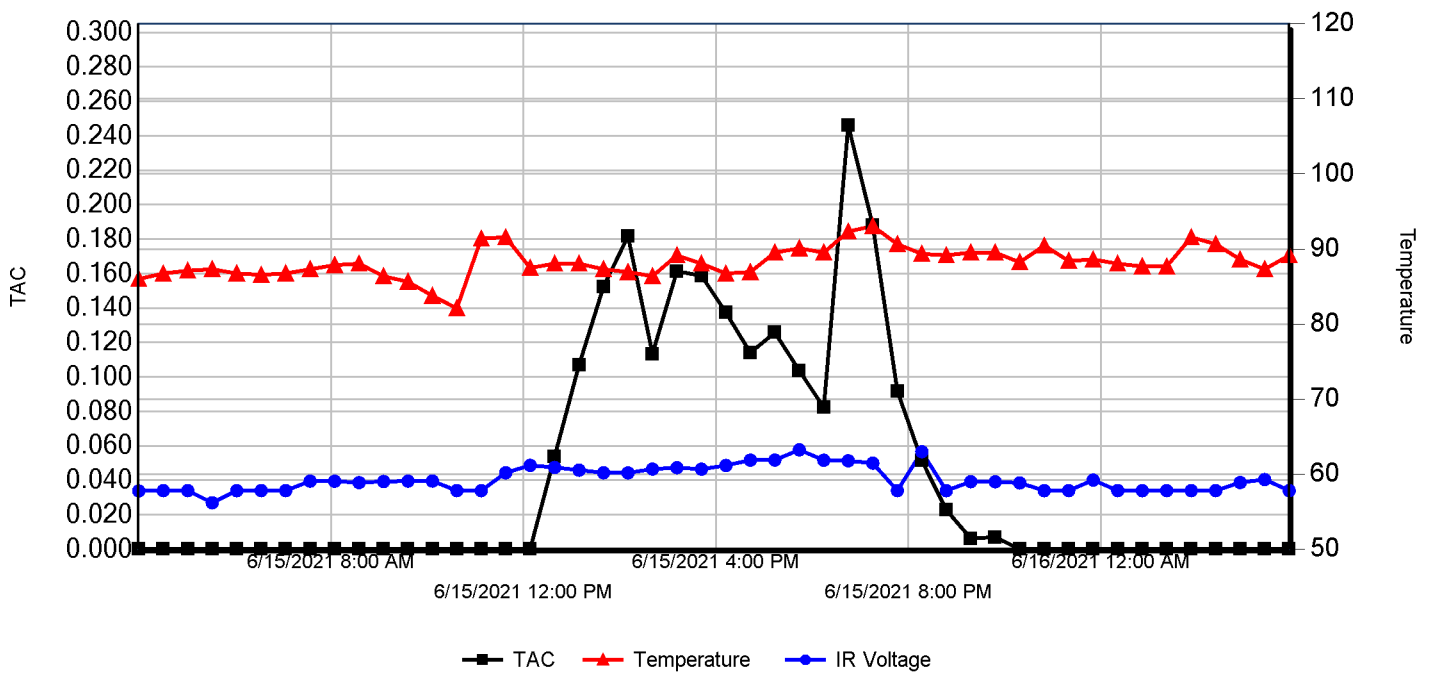
**Client Information**

Client JOHN DOE first began the SCRAM CAM program on 2/11/2021. They were assigned SCRAM CAM Bracelet 654321 on 2/23/2021. SCRAM CAM Bracelet 654321 was last serviced and calibrated at SCRAM Systems on 1/22/2021.

**Graph Interpretation**

The graph displays the relationship between TAC, IR, and Temperature measurements in the CAM Bracelet. The Transdermal Alcohol Concentration (TAC) readings are the black line and are represented on the scale to the left of the graph. The Infrared (IR) readings are identified on the blue line, and the temperature readings are displayed on the red line and represented by the scale on the right of the graph. When a CAM Bracelet is placed on a client, baseline IR voltage readings are established indicating the CAM Bracelet is installed on the client.

**Confirmed Tamper with Alcohol Detected**



This event met SCRAM Systems criteria for a confirmed tamper:

1. The IR voltage baseline prior to the event was .669 volts.
2. The IR voltage at the start of the deviation was .777 volts.
3. Deviation outside of the acceptable variance began on Tuesday, June 15, 2021 at 7:33 AM and returned to baseline on Wednesday, June 16, 2021 at 12:21 AM.
4. The total duration of the confirmed tamper was 0 days 16 hours and 48 minutes.
5. Alcohol was detected during the tamper.

## **NON - COMPLIANCE REPORT CONCLUSION**

Client JOHN DOE had one (1) event that met SCRAM Systems criteria and was confirmed as alcohol consumption.

Client JOHN DOE had two (2) events that met SCRAM Systems criteria and were confirmed as a tamper.