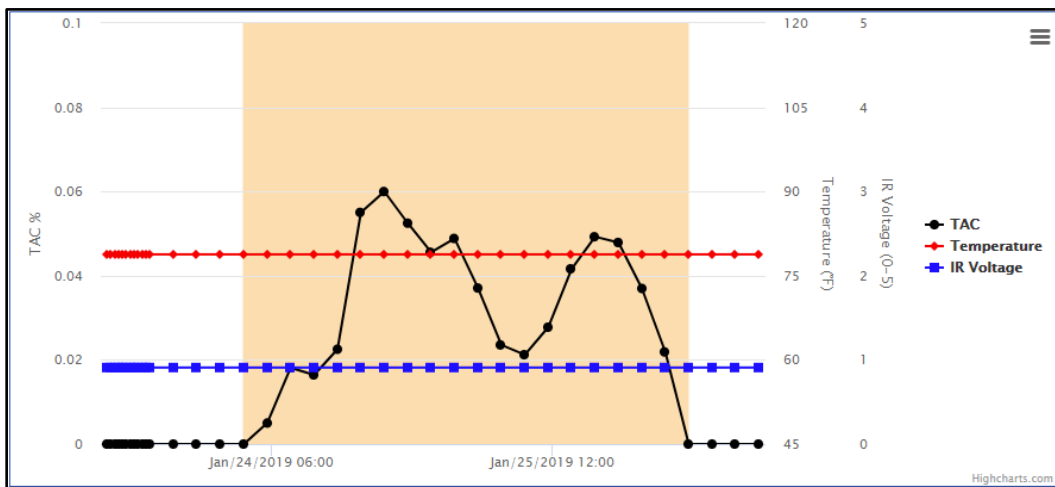


SCRAM Systems® – New Readings Graph in SCRAMNET®

At 2:00 PM MDT on August 29, 2019, SCRAM Systems will be introducing a new interactive graphing tool available for users from the Alert Management Console in SCRAMNET. This feature includes many visualization and output enhancements, such as isolating a specific sample, as well as support for multiple output formats for saving graph images.

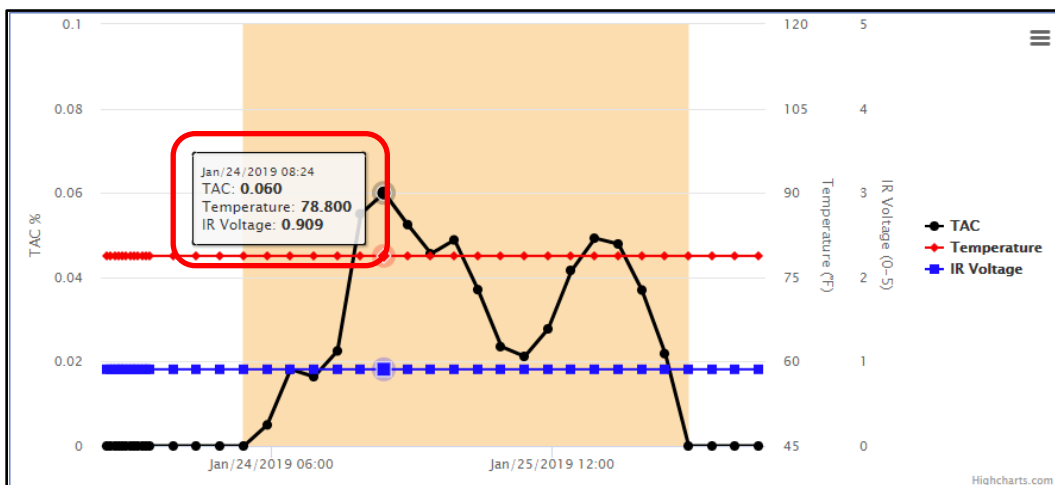
As you know, the SCRAM CAM Bracelet takes an air sample every 30 minutes for evaluation. The results of the device’s evaluation are transferred to the system and, if a violation is suspected, an alert is generated. That alert appears on the active *Workload* page in SCRAMNET, with the details available at any time by clicking on the alert to access the Alert Management Console. The example below illustrates the data points of an Alcohol Detected alert using the new graph.



Let’s look at the various features available while viewing the graph.

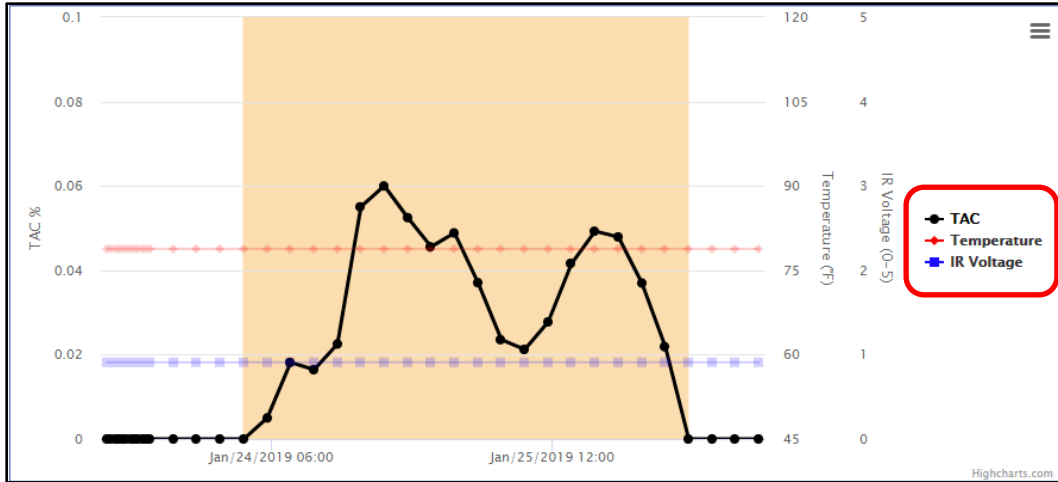
Point in Time Pop Up

When viewing the graph, you may want to isolate the three results (TAC, Temperature, IR Voltage) of a specific sample. To do this, simply hover over any of the three readings for that point in time to display an easy-to-read pop up. In the example below, all readings from at air sample taken at 8:24 AM are listed.



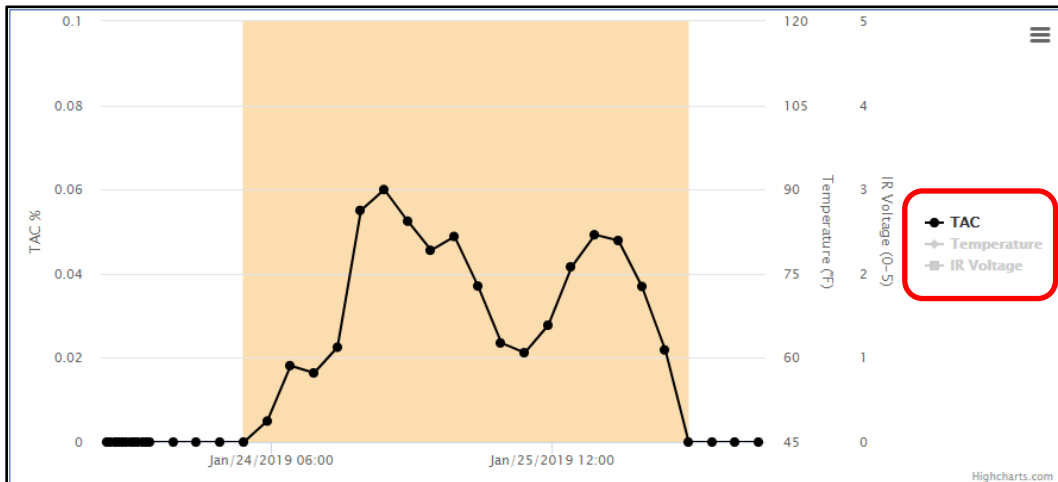
Graph with Highlighted Readings Line

You also have the option to hover over any of the three reading types to bring that specific line to the forefront. In the example below, the user has placed the cursor over the TAC reading type.



Graph with Single Readings Line Displayed

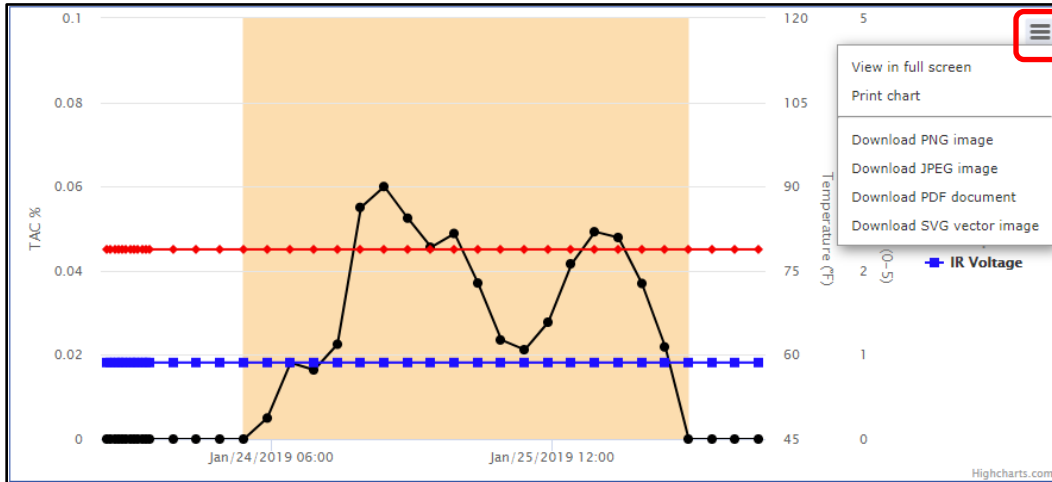
To further isolate a specific type of reading(s), you can click on any of the reading types to toggle that line off (or back on). The Temperature and IR Voltage reading lines have been toggled off in the example below.



Menu Options

Clicking an icon in the upper-right area of the graph displays additional features, including:

- Expand the graph to full-screen size for easier viewing.
- Print the graph (chart).
- Create an image in .PNG, .JPEG, or .SVG format.
- Create a .PDF file of the graph.



Feedback

As always, please feel free to contact SCRAM Systems Customer Services at 1-303-785-7879 with any recommendations for system improvements.