

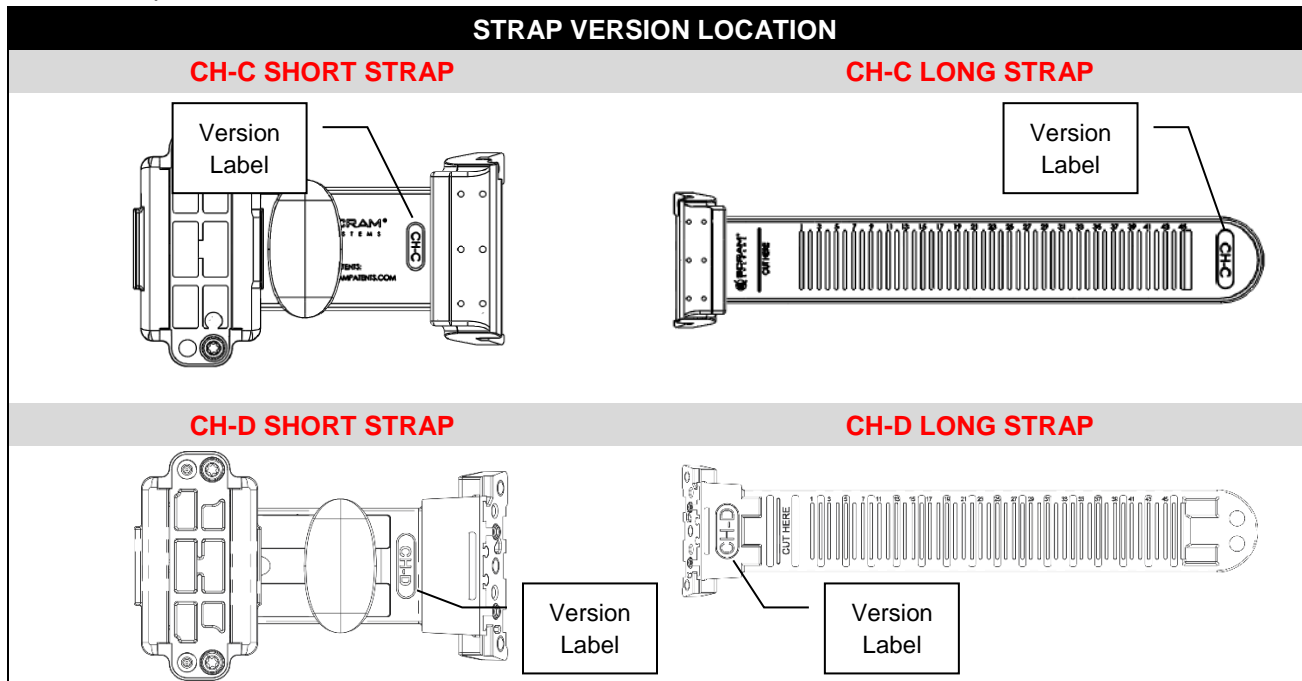
CH-C/CH-D Bracelet Straps Version Compatibility Statement

SCRAM Systems currently has two versions of CH bracelet straps (CH-C and CH-D). You may have both in your inventory. If you do, the below points are critical to avoid compatibility issues:

- CH-C and CH-D straps are NOT compatible
- CH-C and CH-D buckle tops are NOT compatible
- “Square” and “Pointed” tamper clips are NOT compatible
- Combining or intermingling the components will not allow a closed strap status

CH-C/CH-D Bracelet Straps

The two strap versions used on the SCRAM CAM or SCRAM House Arrest Bracelet are identified below:



Both sides of the straps have the version identifier, making it easier to ensure that compatible strap sides are used on any given bracelet.

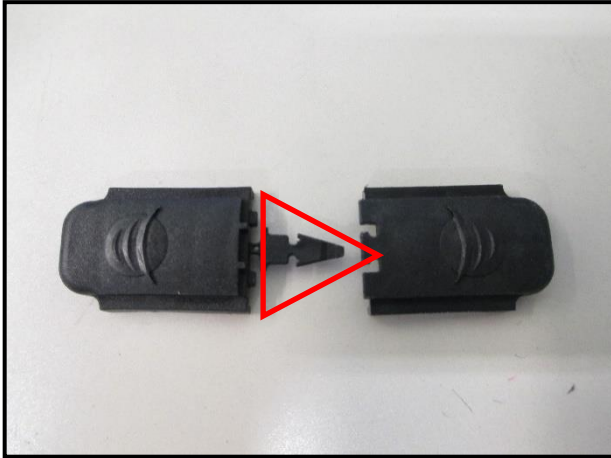
CH-C/CH-D Buckle Tops

The CH-C and CH-D buckle tops appear to be identical. However, the underside of the tops are distinctly different and are NOT interchangeable. Because of this, if you completely unattach the buckle top while removing a bracelet from a client, SCRAM Systems strongly recommends that you immediately reattach the buckle top to the buckle. Following this recommendation ensures that you do not attach a non-compatible buckle top at a later date.

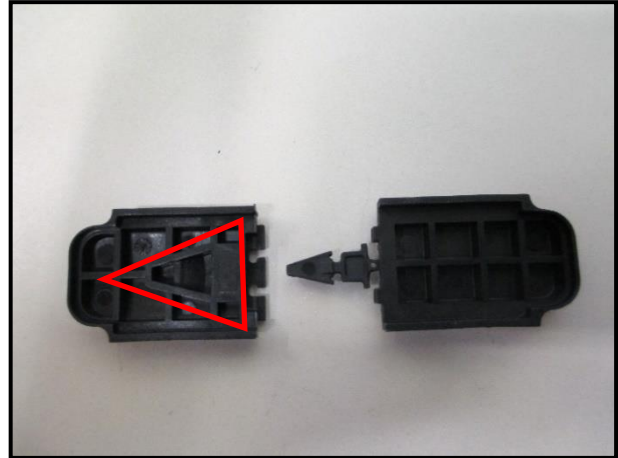
Bracelet Buckle Tamper Clips

The two versions of tamper clips are shown below:

Previous CH Tamper Clips – **POINTED**

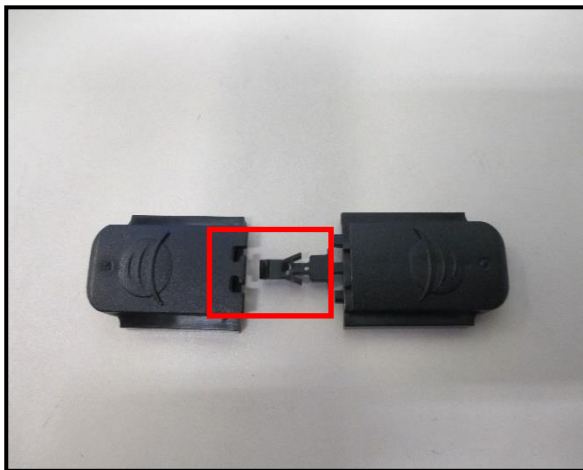


Front

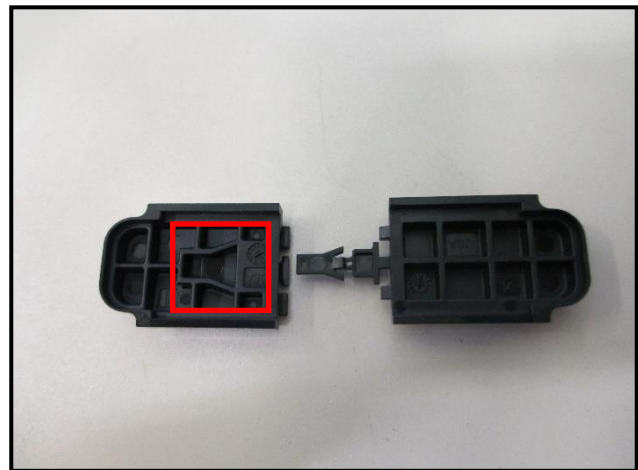


Back

New CH Tamper Clips – **SQUARE**



Front



Back

Feedback

As always, please feel free to contact SCRAM Systems Customer Services at 1-303-785-7879 with any recommendations for system improvements.